



# The Tennant Advantage

## FLOOR COATING SOLUTIONS

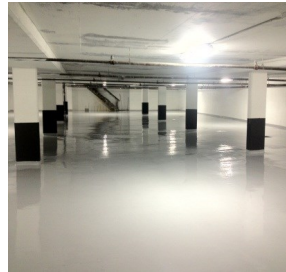


### Eco-CUR™

#### Cementitious Urethane Mortars and Leveling Mortars

Food & Beverage Production • Chemical Areas • Commercial Kitchens • Car Wash • Service Drop Off

- Withstands temperature variations from -330°F to +240°F
- Seamless, does not promote bacterial growth
- Creates a protective barrier against chemicals & high pressure cleaning
- Withstands heavy -wheeled traffic with excellent abrasion resistance



### Eco-FLP/FLB/FLA Deck Coatings™

#### Flexible Epoxy Membrane

Restrooms • Mezzanines • Parkades • Waterproofing Membrane

- Continues to flex and bend, to withstand cracking, for life of coating
- Acts as a water-proof membrane
- LEED® 4.2 credits available
- Custom color matching available
- Ideal for multi-story water proofing

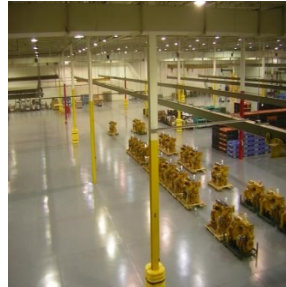


### Eco-Shop Floor™

#### High Performance / High Traffic

Automotive Service Areas • Industrial High Traffic • Boiler Rooms • Production / Manufacturing

- Eco-HTS-100™ topcoat last up to twice as long as standard urethanes and four times longer than standard epoxies
- Excellent slip resistance, even under wet conditions.
- Chemical resistant
- UV Stable



### Eco-PT250™

#### Power Trowel Epoxy Resurfacer

High Impact Environments • Repair badly eroded concrete • Industrial • Manufacturing • Automotive

- Avoids costly floor replacement
- Reduces cleaning and maintenance costs
- 11,700 psi, can handle extremely heavy loads in main traffic aisles and loading docks
- High Temperature and Chemical Resistant formulas available

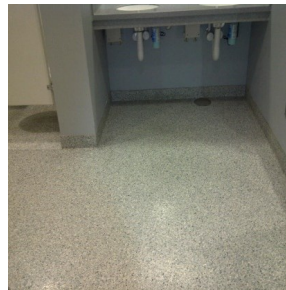


### Eco-SDS™

#### Static Resistant Chemical-Resistant Urethane

Studios • Munitions • Electronics • Aviation • Data Center • Medical Environments

- Meets ANSI /ESD S20.20-2007 for resistance  $<1 \times 10^9$  ohms and  $< 100$  volts Body Voltage Generation
- LEED® 4.2 credits available
- Light stable over the course of life of coating
- Eco-HTS-100 technology, last up to four times longer than standard epoxies systems
- Thin mil, 25 mil systems

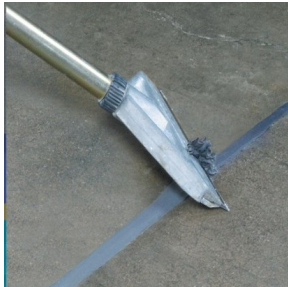


### Eco-DFS™, Eco-DQS™ & MMA

#### High-Performance Decorative Floors and Walls

Restrooms • Locker Rooms • Gang Shower Walls & Floors • Decorative non-skid applications • Arena • Education • Restaurant

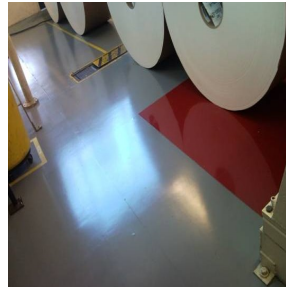
- Compliment any environment with a virtual rainbow of UV stable colors and patterns
- Quartz exposed aggregate application provides one of the most slip-resistant floors available
- UV and Chemical resistancy with Eco-HTS-100 topcoat



### Patching & Repair Products

- **Eco-FPE** Fast Patch Epoxy
- **Eco-EJF Ultra** Epoxy Joint Filler
- **Eco-PJS** Polyurea Joint Filler
- **Eco-HF250** High fill mortar repair
- **Eco-RS60** Self leveling 1/16" epoxy
- **Eco-RS125** ¼" epoxy mortar repair
- **Eco-HTS-100** Touch-up kit

- Schedule repairs as needed to reduce downtime
- Recoat existing floors for increased durability
- Handles heavy loads in main traffic and loading docks

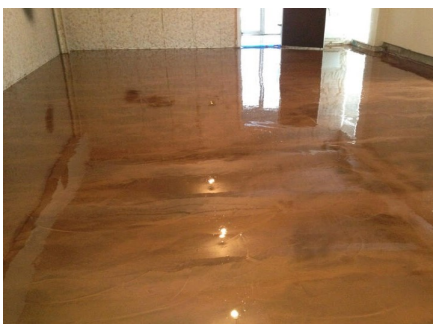


### Eco-HTS / HPS-100™

#### High Wear Aliphatic Urethanes

Aviation • Manufacturing • Residential • Office Space • Education • Food & Beverage • Industrial

- Excellent chemical and abrasion resistance
- High Gloss (HPS) or Satin (HTS) finishes
- 100% aliphatic, will not yellow from UV rays
- Reduces lighting needs and cleaning costs
- Low odor formula, 5 g/L VOC
- Proprietary formula withstands harsh Industrial Traffic, Skydrol®, jet fuels, oils, and chemicals



For your free floor survey, please contact  
Starpatch Concrete Products

- ◆ Peter Jessen—(604) 803-7331
- ◆ Bendix Jessen—(604) 803-7317

